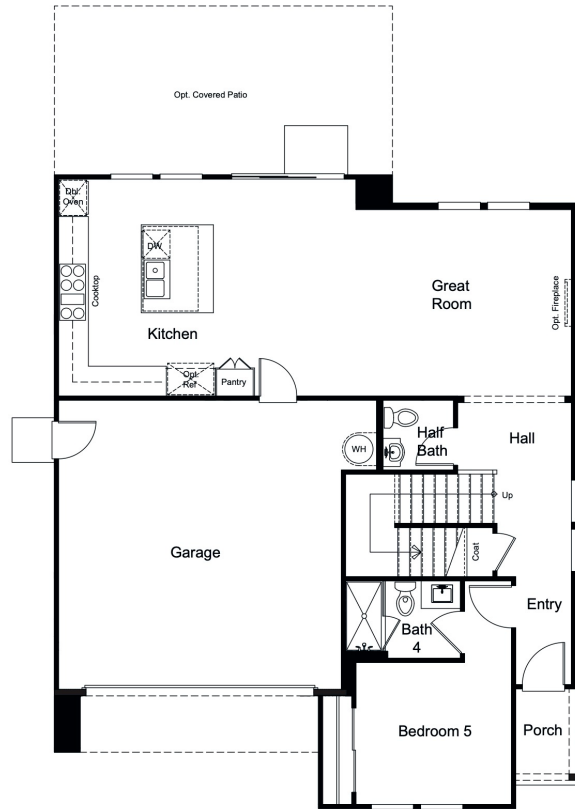
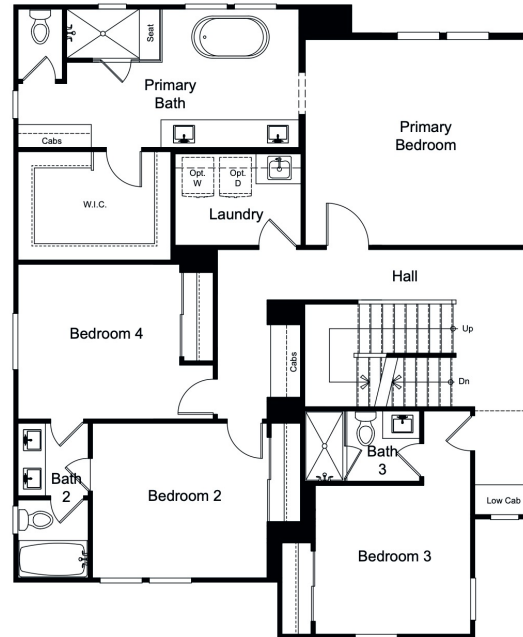


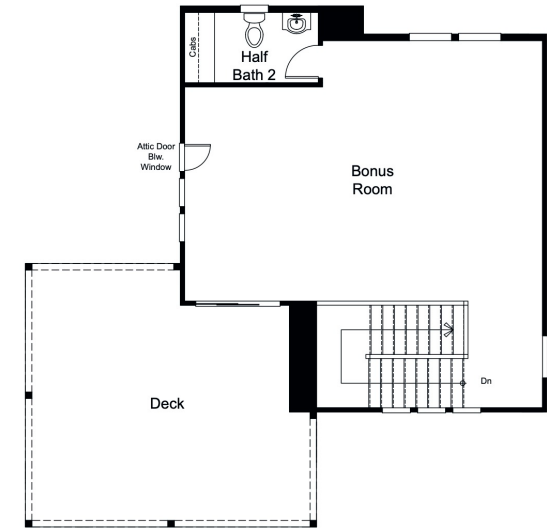
Approx. 3,008 sq. ft. | 5-6 Beds | 4.5-5.5 Baths | 2-Car Garage | 3-Story



FIRST FLOOR



SECOND FLOOR



THIRD FLOOR

**LUNA PARK**  
at GREAT PARK  
NEIGHBORHOODS

[GreatParkNeighborhoods.com](http://GreatParkNeighborhoods.com)

All information (including, but not limited to prices, views, availability, school assignments and ratings, incentives, floor plans, elevations, site plans, features, standards and options, assessments and fees, planned amenities, programs, conceptual artists' renderings and community development plans) is not guaranteed and remains subject to change, availability or delay without notice. Any community improvements, recreational features and amenities described are based upon current development plans, which are subject to change and under no obligation to be completed. Maps and plans are not to scale, are not intended to show specific detailing and all dimensions are approximate. Prices may not include lot premiums, upgrades and options. Community Association or other fees may be required. This communication is not intended to constitute an offering in violation of the law of any jurisdiction and in such cases our communications may be limited by the laws of your state. No Purchase Agreement may be negotiated or signed by a prospective buyer for the purchase of a home until the Community's applicable Conditional or Final Public Report has been issued by the Department of Real Estate ("DRE"). Please see a Taylor Morrison Community Sales Manager or Internet Home Consultant for details and visit [www.taylormorrison.com](http://www.taylormorrison.com) for additional disclaimers. William Lyon Homes Inc.; CSLB License # 527293. © May 2026. Taylor Morrison Services, Inc.; DRE License # 00968975. All rights reserved.