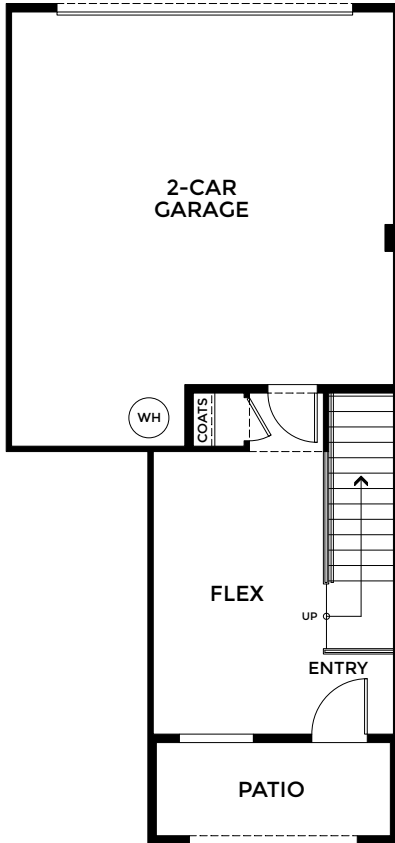


Andara

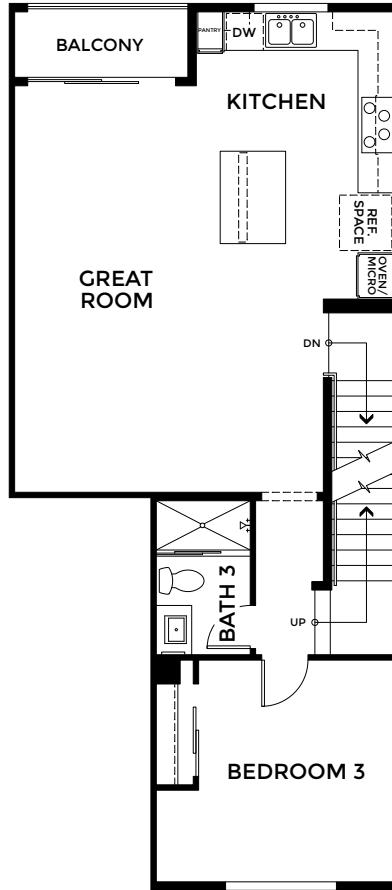
Plan 1

TRUMARK HOMES

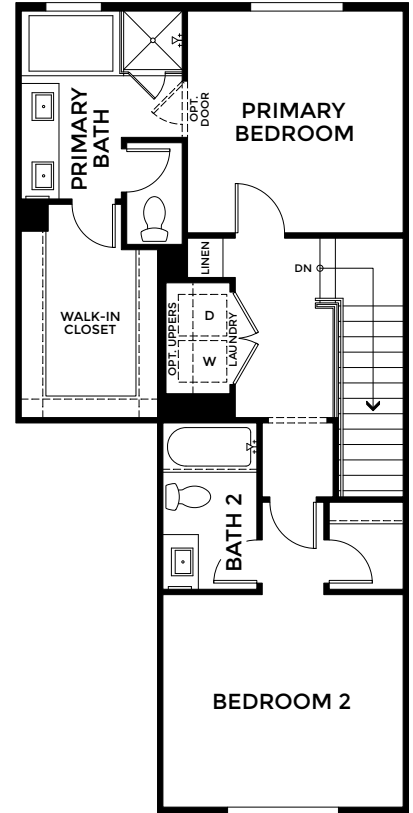
Approx. 1,815 sq. ft. | 3 Beds | 3 Baths | 2-Car Garage | Three-Story



FIRST FLOOR



SECOND FLOOR



THIRD FLOOR

GreatParkNeighborhoods.com

LUNA PARK

at GREAT PARK
NEIGHBORHOODS

This is not an offer to sell but is intended for information only. Trumark Homes reserves the right to make modifications to materials, specifications, brand names, appliances, fixtures, plans, pricing, various fees, designs, scheduling, and delivery of homes without prior notice. Square footages are approximate. Plans and dimensions may contain minor variations from floor to floor. Floor plans are for representational purposes only. Homes shown do not represent actual homesites. Rendering and photographs are artists' conceptions and do not reflect actual homesites. Models do not display racial preference. CA DRE license #01877720. 3/26